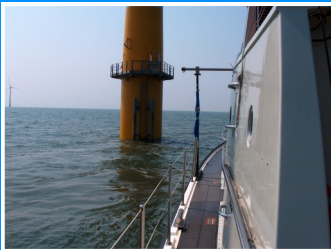
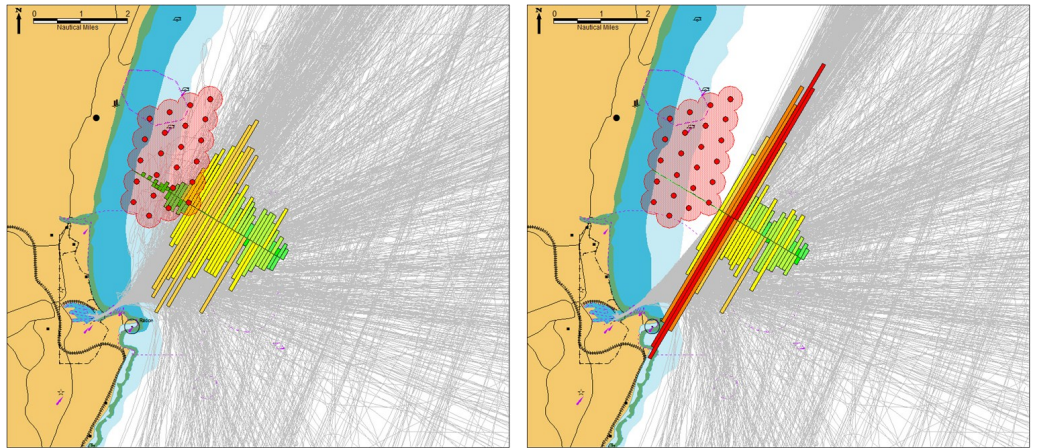


# OFFSHORE WINDFARMS CAPABILITY

## *Navigation Assessments*

Marico Marine Master Mariners, Risk Specialists, Engineers and Geographers provide a total navigation and risk assessment solution for the Offshore Wind Industry. Assessments for prospective sites are conducted to the specifications of the MCA's MGN 371 (M+F), using advanced data analysis techniques, specialist in house software and expert judgment.



## *Capability*

Marico Marine provides consultancy to Offshore Wind Developers

- Scoping studies for license application;
- Navigational Assessments for Environmental Statements;
- Navigational Risk Assessment using the FSA process;
- Ship and Shore Based Vessel Traffic Surveys;
- Marine Radar Assessment; and
- Safety Management Systems.

## *Projects / Clients*

- NAREC Demonstrator site off Blyth, Natural Power Consultants
- Effects on Marine Radar Close to an Offshore Wind Farm, BWEA;
- Gunfleet Sands Wind Farm Extension, DONG Energy;
- Thanet & Dudgeon Offshore Wind Farms, Warwick Energy Limited;
- Dunkirk Wind Farm, Shell Wind Energy;
- Aberdeen Offshore Wind Farm, Aberdeen Harbour Authorities; and
- Greater Gabbard Wind Farm, Fluor / Airtricity.

Marine and Risk Consultants Ltd  
MARICO House  
Bramshaw  
Southampton  
SO43 7JB

Tel: +44 (0) 2380 811 133  
E-mail: [office@marico.co.uk](mailto:office@marico.co.uk)

[www.marico.co.uk](http://www.marico.co.uk)

